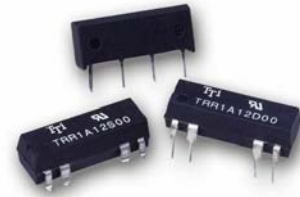


TRR

MAIN FEATURES

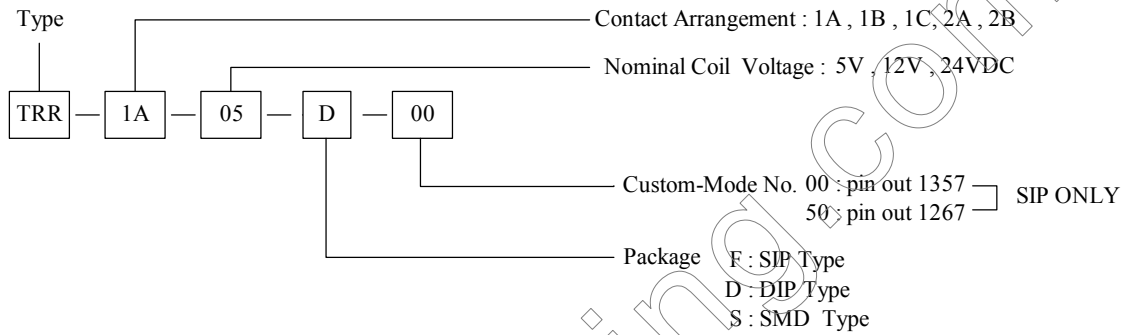
- Miniature, cost-effective switching solution.
- State of the art capsule designs.
- Molded construction for compatibility with automatic board processing.
- Epoxy-molded dual-in-line package.
- Completely washable.



APPLICATIONS

- Measuring equipment, Communication equipment, Control equipment, Appliances, etc.

ORDERING INFORMATION



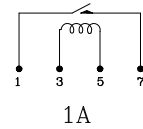
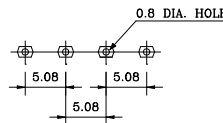
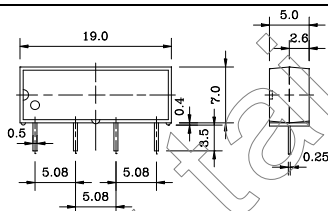
DIMENSION (unit:mm)

DRILLING (unit:mm)

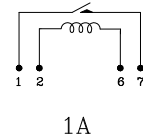
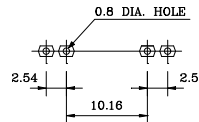
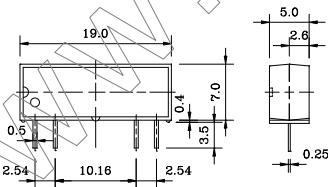
WIRING DIAGRAM

SIP Type

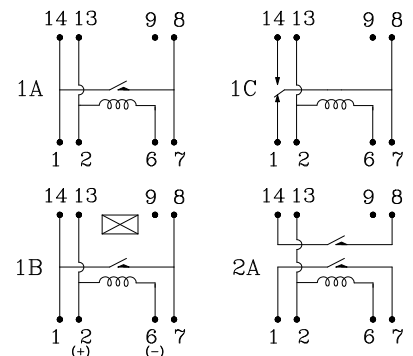
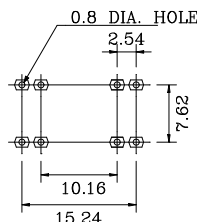
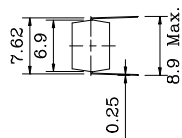
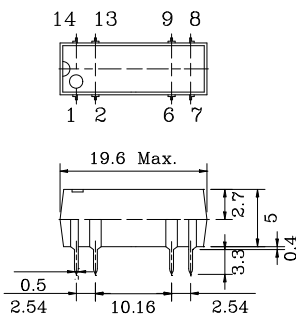
TRR-00
(00:PIN OUT 1357)



TRR-50
(50:PIN OUT 1267)



DIP Type

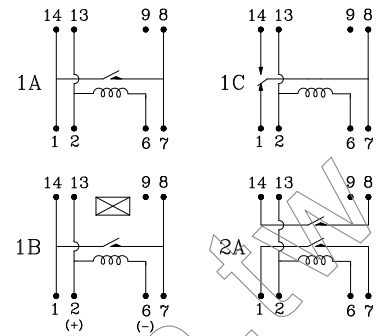
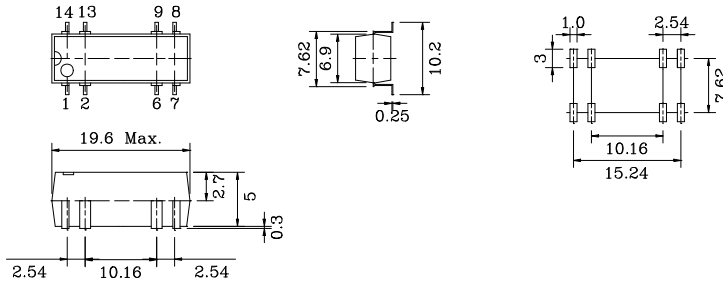


■ DIMENSION(unit:mm)

■ DRILLING(unit:mm)

■ WIRING DIAGRAM

SMD Type

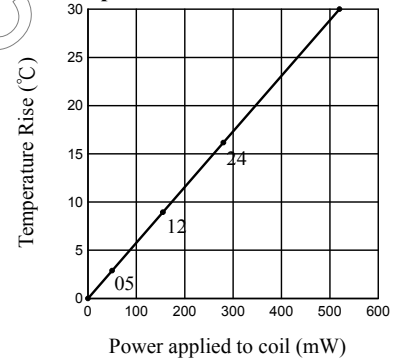


■ COIL DATA CHART (AT20°C)

■ REFERENCE DATA

| Coil Sensitivity | Nominal Voltage (VDC) | Max. Operate Voltage (VDC) | Nominal Current (mA) | Coil Resistance ($\Omega \pm 10\%$) | Power Consumption (mW) | Pull-In Voltage (VDC) | Drop-Out Voltage (VDC) |
|------------------|-----------------------|----------------------------|----------------------|---------------------------------------|------------------------|-----------------------|------------------------|
| TRR-1A TRR-1B | 5 | 6 | 10 | 500 | 50 | 3.75 | 0.8 |
| | 12 | 14.5 | 12 | 1000 | 144 | 9.0 | 1.0 |
| | 24 | 29 | 11.2 | 2150 | 268 | 18.0 | 2.0 |
| TRR-1C | 5 | 11 | 25 | 200 | 125 | 3.75 | 0.8 |
| | 12 | 20 | 24 | 500 | 288 | 9.0 | 1.0 |
| | 24 | 32 | 11.2 | 2150 | 268 | 18.0 | 2.0 |
| TRR-2A | 5 | 11 | 35.7 | 140 | 179 | 3.75 | 0.8 |
| | 12 | 20 | 24 | 500 | 288 | 9.0 | 1.0 |
| | 24 | 32 | 11.2 | 2150 | 268 | 18.0 | 2.0 |

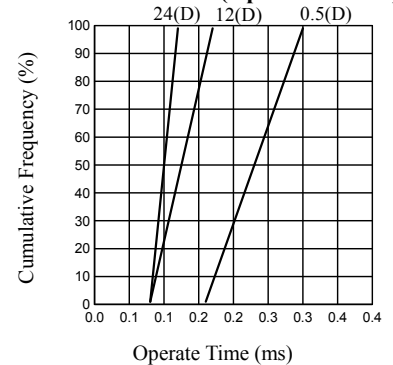
Coil Temperature Rise



■ PERFORMANCE

| | | |
|-------------------------------------------|---------------------------------|-------------------------------|
| Contact form | Δ A/1B/2A | 1C |
| Switching Current | 0.5ADC Max. | 0.2ADC Max. |
| Carry Current | 1.0ADC Max. | 0.5ADC Max. |
| Switching Power | 10VA Max. | 3VA Max. |
| Electrical Life | 1×10^8 (10VDC 10mA) | 5×10^7 (5VDC 1mA) |
| Contact Resistance | 150m Ω Max. | |
| Operation Time (including bounce time) | 1.0msec. Max. | |
| Release Time (including bounce time) | 1.0msec. Max. | |
| Maximum Voltage | 100VDC Max. | 30VAC/DC Max. |
| Insulation Resistance | $10^{10}\Omega$ Min. | $10^9\Omega$ Min. |
| Dielectric Strength | Between coil & contact | 1400VDC |
| | Between contacts | 250VDC |
| Temperature Range | Operating Temp. | -40 to +85°C |
| | Storage Temp. | -55 to +125°C |
| Shock Resistance | 30G Min. | |
| UL File No. | E156521 | |

Time Characteristic (Operation Time)



Time Characteristic (Release Time)

