

Series CS60
Microelectronic
Power IC Relay
300mA
20-280V AC

CHIPSWITCH® DIP RELAY

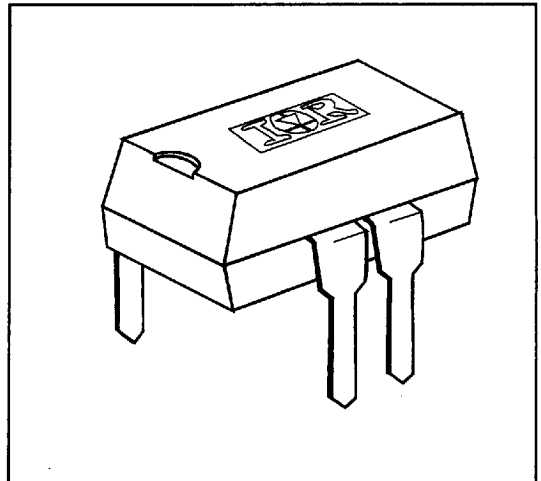
GENERAL DESCRIPTION

The innovative design of the Series CS60 ChipSwitch solid state relay utilizes the S²X power integrated circuit chip developed by International Rectifier. Two optically activated power ICs are connected in inverse parallel (analogous to back-to-back SCRs) and energized by an isolated light emitting diode (LED). The use of only three components achieves both extreme reliability and miniaturization.

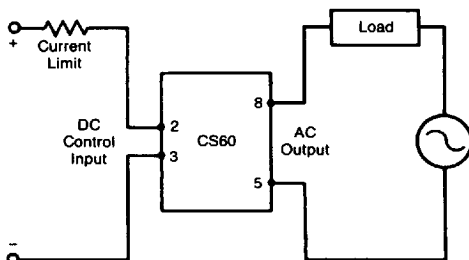
The Series CS60 power IC relays are a normally open configuration with precise zero voltage turn-on and zero current turn off. They conform to the most severe FCC and VDE EMI emission requirements. An active snubber network is integrated within the S²X chips and provides extremely high dv/dt ratings. Therefore, bulky and costly external RC networks are not needed for even low power factor inductive loads. The elimination of external snubber leakages, leaving only the extremely low S²X chip internal leakages, allows perfect operation from very low current loads up to full rating.

These devices are ideally suited for interfacing small AC power loads to microprocessor outputs. Solenoids, lamps, power contactors, small motors, and valves are thereby easily controlled by logic level signals. The Series CS60 units also make excellent high performance drivers for SCR and triac high power output stages.

- S²X Power IC Chips ■
- 5.0 Amp Surge ■
- 4000V RMS Isolation ■
- Zero Voltage Turn-On ■
- EMI Meets FCC/VDE Limits ■
- Operates Without Snubber ■
- 1200V/ μ sec dv/dt ■
- 10 Microamps Leakage ■
- UL Recognized ■
- CSA Certified ■



WIRING DIAGRAM



Part Identification

Part No.	Transient Overvoltage	DC Input Turn-On (mA)
CS6005	600	5.0
CS6010	600	10.0
CS5005	500	5.0
CS5010	500	10.0

■ 4855452 0024139 37T ■

CHIPSWITCH® RELAYS B-1

**ChipSwitch DIP****Electrical Specifications** ($-40^{\circ}\text{C} \leq T_A \leq +85^{\circ}\text{C}$ unless otherwise specified)

INPUT CHARACTERISTICS	CS6005	CS6010	CS5005	CS5010	Units
Control Current range (Caution: Current limit input LED. See figure 3)	5 - 25	10 - 25	5 - 25	10 - 25	mA (DC)
Max. Turn-On Current	5.0	10	5.0	10	V (DC)
Min. Turn-Off Current	0.25				mA (DC)
Max. Reverse Voltage	7.0				V
Max. Turn-On Time (47 - 440 Hz)	0.5				Cycle
Max. Turn-Off Time (47 - 440 Hz)	0.5				Cycle

OUTPUT CHARACTERISTICS	CS6005	CS6010	CS5005	CS5010	Units
Operating Voltage Range (47 - 440 Hz)	20 to ± 280				V(RMS)
Transient Overvoltage (Non-Repetitive)	600		500		V (peak)
Min. Off-State dv/dt (static) ^① 25°C (see figure 4)	1200				V μ s
Max. Load Current ^② (see figure 1)	300				mA (RMS)
Min. Load Current	0.5				mA (RMS)
Power Factor Range	02. - 1.0				—
Max. Surge Current (Non-repetitive) 20 ms (see figure 2)	5.0				A (peak)
Max. Over Current (Non-repetitive) 1 s	2.0				A (peak)
Max. On-State Voltage Drop @ 0.5A	2.0				V (peak)
Max 1 st T for Fusing (.01 sec)	0.2				A ² sec
Max. Zero Voltage Turn-On	12				V (peak)
Max. Peak Repetitive Turn-On Voltage @ 15mA	1.5				V (peak)
Max. Off-State Leakage Current ^② @ Max. Operating Voltage 25°C	10				μ A(RMS)

GENERAL CHARACTERISTICS	Limits	Units
Dielectric Strength, Input-Output	4000	V _{RMS}
Insulation Resistance, Input-Output @ 500VDC	10 ¹²	Ω
Tracking Resistance (VDE Test)	KB100/A	—
Max. Capacitance, Input-Output	1.0	pF
Max. Pin Soldering Temperature (1.6 mm below seating plane, 10 sec.max)	+260	°C
Ambient Temperature Range: Operating	-30 to +85	
Storage	-40 to +100	

NOTES: ^① Off-state dv/dt test method per EIA/NARM standard RS -443 with V_p equal to the instantaneous peak of the maximum operating voltage.

^② LED input current of zero mA

CHIPSWITCH® RELAYS B-2

■ 4855452 0024140 091 ■

ChipSwitch DIP

PERFORMANCE CHARACTERISTICS CURVES

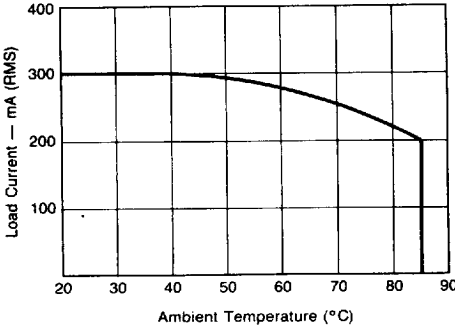


Figure 1. Derating Curve

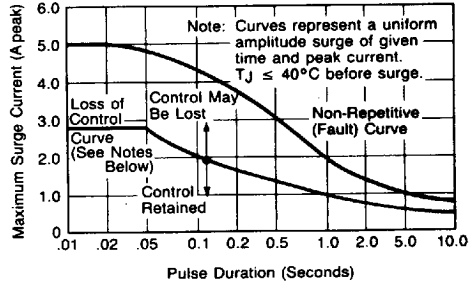


Figure 2. Maximum Allowable Surge (See Notes Below*)

* A surge exceeding the upper (Non-Repetitive Fault) curve can cause catastrophic failure. This limit is an absolute maximum rating and should be used in determining current limit or fusing protection techniques. Repetitions should not exceed 100 times during the normal operating life.

Exceeding the limit of the lower (Loss of Control) curve can cause momentary, but non-catastrophic, inability to instantaneously turn-off the load. Good application practice holds the normal, repetitive load inrush currents below this limit.

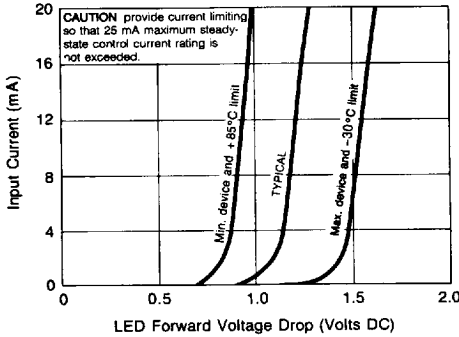


Figure 3. Input Characteristics (Current Controlled)

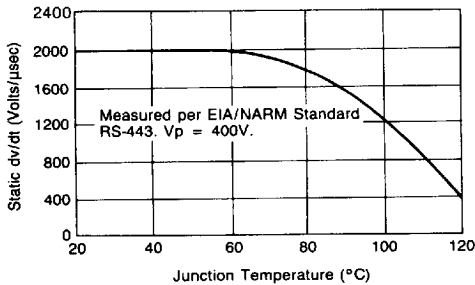
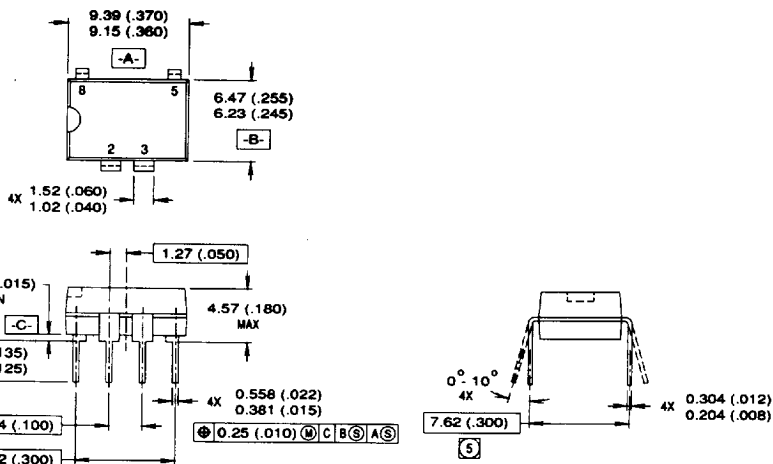


Figure 4. Typical Static dv/dt Performance

4855452 0024141 T28

B-3 CHIPSWITCH® RELAYS

ChipSwitch DIP
CASE OUTLINE

Mechanical Specifications
Dimensions: Millimeters (Inches)

Package Size: 8-pin DIP

Tolerances: .015 (.38) unless otherwise specified

Case Material: Molded epoxy

Weight: .07 oz. (2 grams)