

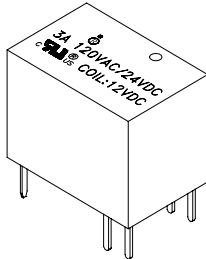


Industrial & Electrical Components

Miniature  
P.C.B Relay

Part No.

NRP-02



Ultra-small type with dimensions.  
High sensitivity:200mW coil power  
UL/C-UL recognized  
Sealed type available

**CONTACT**

Arrangement	1A/1B/1C
Contact Material	AuAg
Contact Resistive	100 mΩ
Rating	3A 120VAC/24VDC
Resistive load (cosφ=1)	3A 220VAC/30VDC
Inductive load (cosφ=0.75)	0.3A 120VAC/24VDC
Max. Switching Voltage	120VAC / 60VDC
Max. Switching Current	3A~5A
Max. Switching Power	360VA / 90W
Expected life	
Mechanical	1×10 <sup>7</sup> Min
Electrical	1×10 <sup>5</sup> Min.

**CHARACTERISTICS**

Operate Time	8ms. Max.
Release Time	4ms. Max.
Initial breakdown voltage	
Between Coil & Contact	1500VAC (50/60Hz)for 1 min.
Between Open Contacts	1000VAC (50/60Hz)for 1 min.
Insulation Resistance	Min.100MΩ (500 VDC)
Shock: Endurance	10G
Damage	50G
Vibration Endurance	10 to 55 Hz ,1.5mm D.A.
Damage	10 to 55 Hz ,1.5mm D.A.
Humidity	85%RH
Ambient temperature	-25 to +70
Unit weight	4g

**ORDERING INFORMATION**

e.g

NRP - 02 - C - 12D - H

Series: Miniature p.c.b Relay

Part No.

Contact Form:

C=1C/O; A = N/O; B= N/C

Coil Voltage: 12D= 12Vdc

Nil= 0.36W coil power

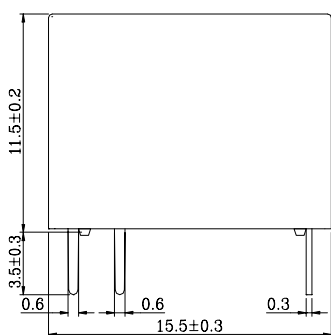
H= 0.20W coil power

**COIL DATA (at 20 )**

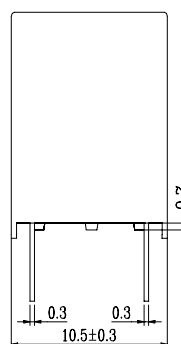
Nominal Voltage (VDC)	Pick-up Voltage VDC(Max)	Drop-out Voltage VDC(Min)	Coil Resistance ( $\Omega$ ) $\pm$ 10%		Nominal operating Power (W)	Max.Allowable Voltage
			High Sensitive 0.20W	Standard 0.36W		
3	2.25	0.30	45	25	0.20 / 0.36	130% of nominal Voltage
5	3.75	0.50	125	70		
6	4.50	0.60	180	100		
9	6.75	0.90	405	225		
12	9.00	1.20	720	400		
24	18.00	2.40	2800	1600		
48	36.00	4.80		5650		

**DIMENSIONS**

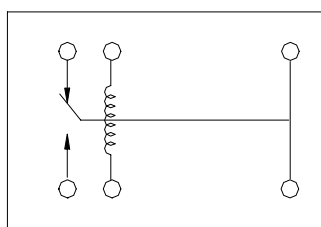
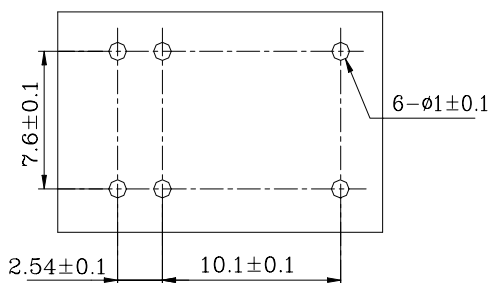
Unit: mm



(BOTTOM VIEW)



(BOTTOM VIEW)



**REFERENCE DATA**

