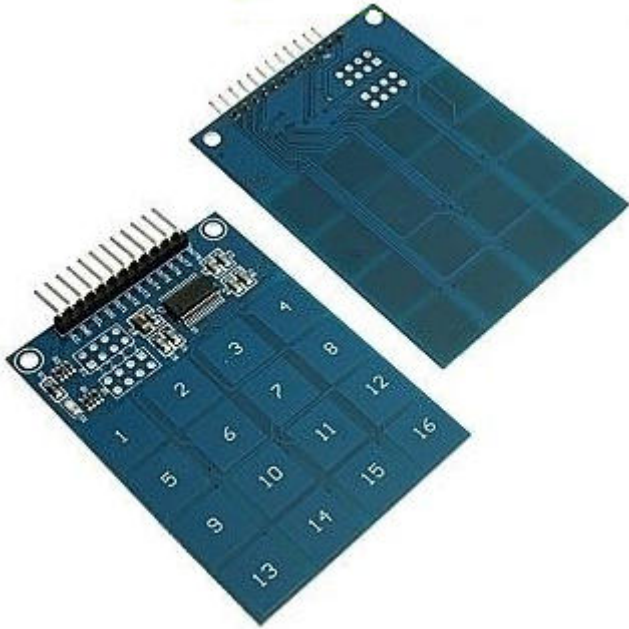


TTP229-16-Channel Touch-Sensor



- 1, on-board TTP229 capacitive touch-sensitive 16-key IC
- 2, Onboard power indicator
- 3, the working voltage: 2.4V-5.5V
- 4, the module can set the output mode, key output mode, the longest output time and fast / low power consumption
- 5, PCB board size: 49.3 (mm) x64.5 (mm)