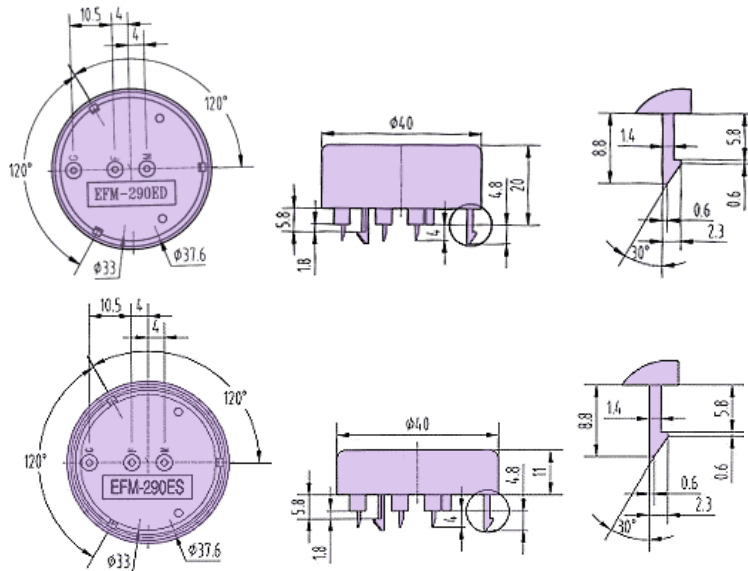


• **EFM-290ED**

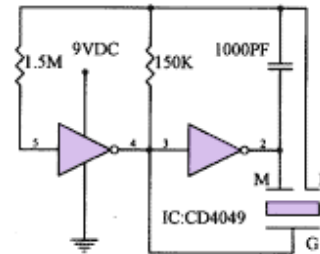


FEATURES:	
●	Can Bear Soldering Temperature
●	Loud output
●	Low current consumption
●	High efficiency and reliability
●	PCB mounting
●	Sealed type
APPLICATIONS:	
●	Alarm Devices, Such as CO Detector, Gas Detector, Fire Warner etc.
●	Automatic Control Equipment

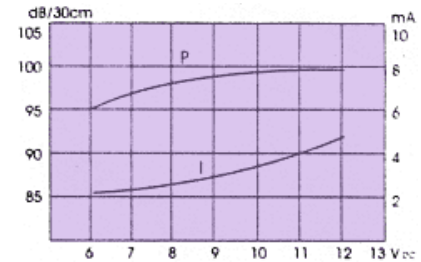
DIMENSIONS: (Unit: mm)



TEST CIRCUIT:



CHARACTERISTICS:



ELECTRICAL SPECIFICATIONS :

Model No.	EFM-290ED	EFM-290ES
Min. Sound Pressure Level (dB)	90 /9V _{DC} /30cm 85 /7.5V _{DC} /300cm	
Rated Voltage (V _{DC})	9	
Operating Voltage (V _{DC})	7 ~ 12	
Max. Consumption (mA)	10 /9(7.5) V _{DC}	
Oscillating Frequency (kHz)	3.4 ± 0.5	3.6 ± 0.5
Operating Temperature (°C)	-20 ~ 70	
Weight (g)	10.8	10.9
Case Material/Colour	ABS/Black	Fire-resistance ABS/Black

PACKING INFORMATION :

Packing :	600 pcs per export carton
Carton Size :	47 X 30.5 X 35 cm
G. Weight :	8.7 kgs
N. Weight :	6.5 kgs