



## FEATURES

- Universal 85 - 264VAC or 120 - 370VDC Input voltage
- Accepts AC or DC input (dual-use of same terminal)
- Operating ambient temperature range: -30°C to +70°C
- Low standby power consumption, high efficiency
- High I/O isolation test voltage up to 4000VAC
- Low ripple & noise
- Output short circuit, over-current, over-voltage, over-temperature protection
- Over-voltage class III (designed to meet EN61558)
- Operating altitude up to 5000m

RoHS



UL62368-1

EN62368-1  
EN60335-1  
EN61558-1  
EN61558-2-16

IEC62368-1

GB4943.1

BS EN 62368-1

IEC 62368-1 Part 1:2019  
IEC 60335-1:2005  
EN 61558-1:2014  
www.bis.gov.in

LM150-20Bxx series is one of Mornsun's enclosed AC-DC switching power supply. It features universal AC input and at the same time accepts DC input voltage, cost-effective, low no load power consumption, high efficiency, high reliability and double or reinforced insulation. These converters offer excellent EMC performance and meet IEC/EN61000-4, CISPR32/EN55032, IEC/EN/UL62368, EN60335, GB4943 standards and they are widely used in areas of industrial, LED, street light control, electricity, security, telecommunications, smart home etc.

## Selection Guide

Certification	Part No.*	Output Power (W)	Nominal Output Voltage and Current (Vo/Io)	Output Voltage Adjustable Range ADJ (V)	Efficiency at 230VAC (%) Typ.	Max. Capacitive Load (µF)
UL/EN/IEC/CCC/BIS/UKCA	LM150-20B12	150	12V/12.5A	10.2-13.8	86	10000
	LM150-20B15	150	15V/10A	13.5 -18	87	6000
	LM150-20B24	156	24V/6.5A	21.6 - 28.8	88	2400
	LM150-20B36	154.8	36V/4.3A	32.4 - 39.6	88	1200
	LM150-20B48	158.4	48V/3.3A	43.2 -52.8	89	600

Note: \*Use suffix "C" for terminal with protective cover and suffix "Q" for conformal coating.

## Input Specifications

Item	Operating Conditions	Min.	Typ.	Max.	Unit	
Input Voltage Range	AC input	85	--	264	VAC	
	DC input	120	--	370	VDC	
Input Voltage Frequency		47	--	63	Hz	
Input Current	115VAC	--	--	4	A	
	230VAC	--	--	2		
Inrush Current	115VAC	Cold start	--	30		--
	230VAC		--	60		
Leakage Current	240VAC	<0.75mA				
Hot Plug		Unavailable				

## Output Specifications

Item	Operating Conditions	Min.	Typ.	Max.	Unit	
Output Voltage Accuracy	Full load range	--	±1	--	%	
Line Regulation	Rated load	--	±0.5	--		
Load Regulation	0% - 100% load	--	±0.5	--		
Ripple & Noise*	20MHz bandwidth (peak-to-peak value)	12V/15V	--	--	150	mV
		24V/36V/48V	--	--	200	
Temperature Coefficient		--	±0.03	--	%/°C	
Minimum Load		0	--	--	%	
Stand-by Power Consumption		--	--	0.5	W	

Hold-up Time	115VAC	8	--	--	ms
	230VAC	16	--	--	
Short Circuit Protection	Recovery time <5s after the short circuit disappear.	Hiccup, continuous, self-recovery			
Over-current Protection		110%-150% Io, self-recovery			
Over-voltage Protection	12V	≤16.2V	Output voltage turn off, re-power on for recovery		
	15V	≤21.75V			
	24V	≤33.6V			
	36V	≤48.6V			
	48V	≤60V			
Over-temperature Protection		Output voltage turn off, self-recovery			
Note: *The "Tip and barrel method" is used for ripple and noise test, output parallel 47uF electrolytic capacitor and 0.1uF ceramic capacitor, please refer to Enclosed Switching Power Supply Application Notes for specific information.					

## General Specifications

Item	Operating Conditions		Min.	Typ.	Max.	Unit	
Isolation	Input - ⊕	Electric strength test for 1min., leakage current <10mA	2000	--	--	VAC	
	Input - output		4000	--	--		
	Output - ⊕		1250	--	--		
Insulation Resistance	Input - ⊕	At 500VDC	50	--	--	MΩ	
	Input - output		50	--	--		
	Output - ⊕		50	--	--		
Operating Temperature			-30	--	+70	°C	
Storage Temperature			-40	--	+85		
Storage Humidity	Non-condensing			10	--	95	%RH
Operating Humidity				20	--	90	
Switching Frequency			--	65	--	kHz	
Power Derating	Operating temperature derating	85VAC-100VAC	-30°C to -25°C	5	--	--	% / °C
		12V	+45°C to +70°C	2	--	--	
		15V/24V/36V/48V	+50°C to +70°C	2.5	--	--	
	Input voltage derating		85VAC-100VAC		1.33	--	--
Safety Standard			IEC/UL62368-1, IS13252 (Part1), GB4943.1 safety approved & EN60335-1, EN62368-1, EN61558-1/-2-16, BS EN 62368-1 (Report)				
Safety Class			CLASS I				
MTBF	MIL-HDBK-217F@25°C		>300,000 h				

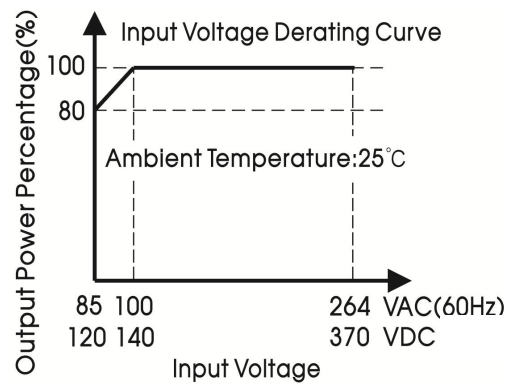
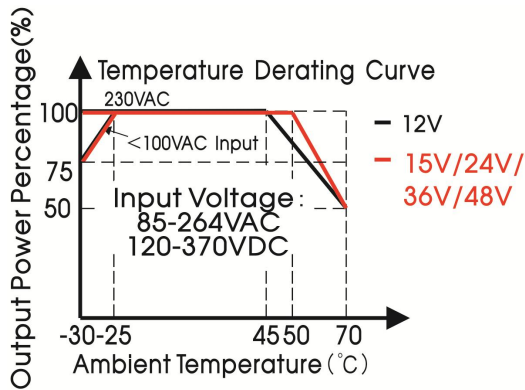
## Mechanical Specifications

Case Material	Metal (AL1100, SGCC)
Dimensions	159.00 x 97.00 x 30.00mm
Weight	410g (Typ.)
Cooling Method	Free air convection

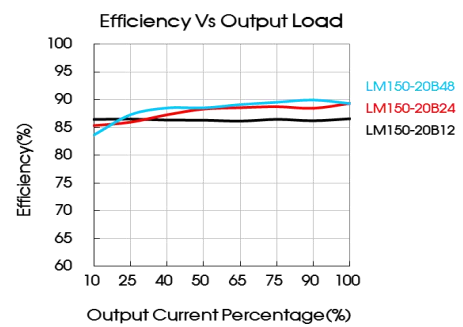
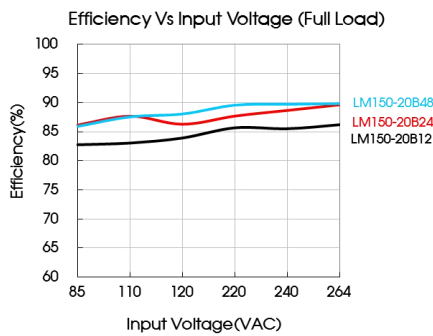
## Electromagnetic Compatibility (EMC)

Emissions	CE	CISPR32/EN55032	CLASS B	
	RE	CISPR32/EN55032	CLASS B	
	Harmonic current	IEC/EN61000-3-2	CLASS A (≤80% Load)	
Immunity	ESD	IEC/EN61000-4-2	Contact ±6KV/Air ±8KV	Perf. Criteria A
	RS	IEC/EN61000-4-3	10V/m	Perf. Criteria A
	EFT	IEC/EN61000-4-4	±4KV	Perf. Criteria A
	Surge	IEC/EN61000-4-5	line to line ±2KV/line to ground ±4KV	Perf. Criteria A
	CS	IEC/EN61000-4-6	10Vr.m.s	Perf. Criteria A
	Voltage dips, short interruptions and voltage variations immunity	IEC/EN61000-4-11	100% dip 1 periods, 30% dip 25 periods, 100% interruptions 250 periods	Perf. Criteria B

Product Characteristic Curve

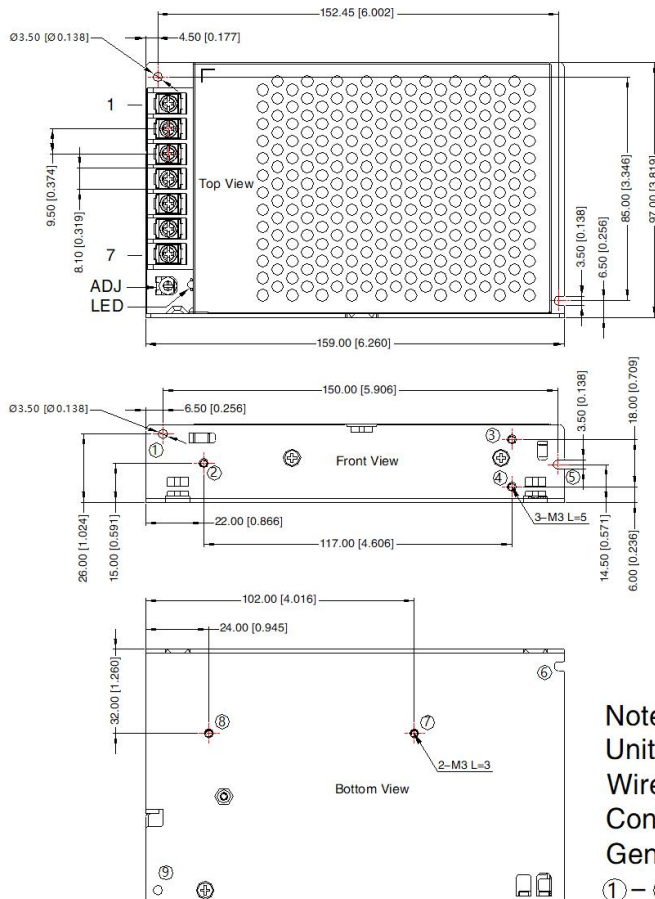


- Note: 1. With an AC input voltage between 85 -100VAC and a DC input between 120 -140VDC the output power must be derated as per the temperature derating curves;  
 2. This product is suitable for applications using natural air cooling; for applications in closed environment please consult factory or one of our FAE.

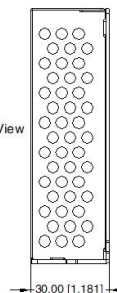


Dimensions and Recommended Layout

LM150-20Bxx, LM150-20Bxx-Q Series

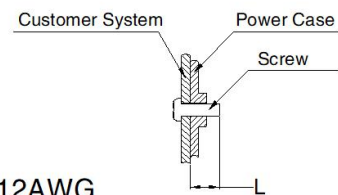


THIRD ANGLE PROJECTION



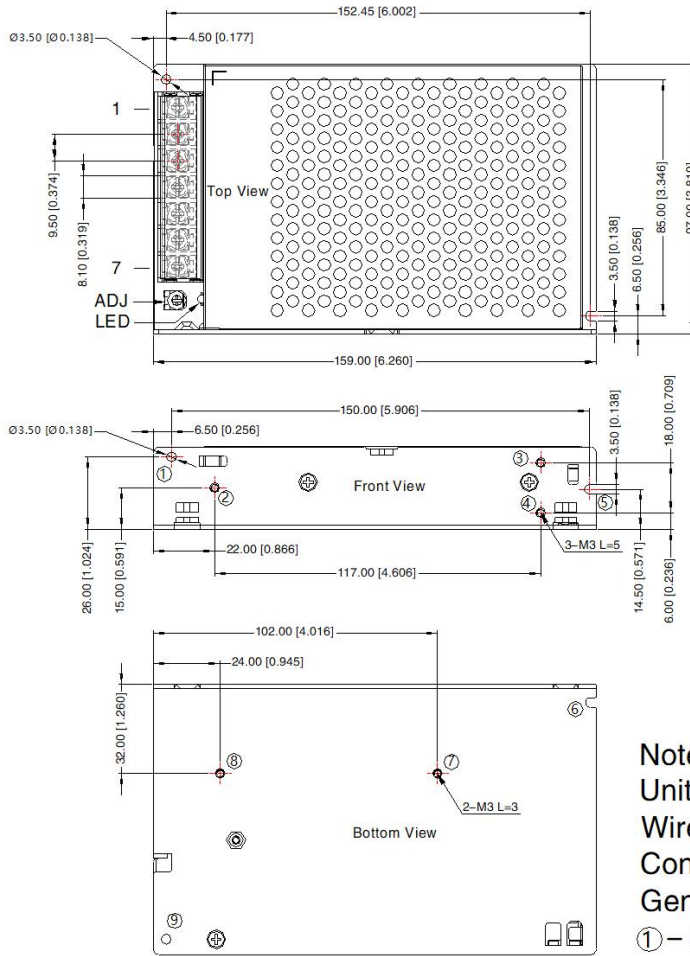
Pin-Out	
Pin	Function
1	AC(L)
2	AC(N)
3	⊕
4	-Vo
5	-Vo
6	+Vo
7	+Vo

Position	Screw Spec.	L(max)	Torque(max)
② - ④	M3	5mm	0.4N·m
⑦ - ⑧	M3	3mm	0.4N·m

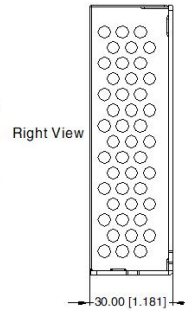


- Note:  
 Unit: mm[inch]  
 Wire range: 22-12AWG  
 Connector tightening torque: M3.5, 0.8N·m  
 General tolerances: ± 1.00[± 0.039]  
 ① - ⑨ any position must be connected to PE

LM150-20Bxx-C Series

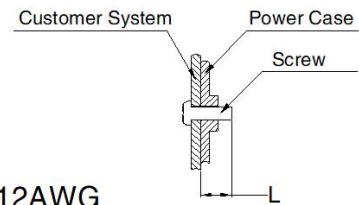


THIRD ANGLE PROJECTION



Pin-Out	
Pin	Function
1	AC(L)
2	AC(N)
3	⊕
4	-Vo
5	-Vo
6	+Vo
7	+Vo

Position	Screw Spec.	L(max)	Torque(max)
② - ④	M3	5mm	0.4N·m
⑦ - ⑧	M3	3mm	0.4N·m



Note:  
Unit: mm[inch]  
Wire range: 22-12AWG  
Connector tightening torque: M3.5, 0.8N·m  
General tolerances: ± 1.00[± 0.039]  
① - ⑨ any position must be connected to PE

- Note:
- For additional information on Product Packaging please refer to [www.mornsun-power.com](http://www.mornsun-power.com). Packaging bag number: 58220111;
  - Unless otherwise specified, parameters in this datasheet were measured under the conditions of Ta=25°C, humidity<75%RH with nominal input voltage and rated output load;
  - The room temperature derating of 5°C/1000m is needed for operating altitude greater than 2000m;
  - All index testing methods in this datasheet are based on our company corporate standards;
  - In order to improve the efficiency at high input voltage, there will be audible noise generated, but it does not affect product performance and reliability;
  - We can provide product customization service, please contact our technicians directly for specific information;
  - Products are related to laws and regulations: see "Features" and "EMC";
  - The out case needs to be connected to the earth (⊕) of system when the terminal equipment in operating;
  - Our products shall be classified according to ISO14001 and related environmental laws and regulations, and shall be handled by qualified units.

Mornsun Guangzhou Science & Technology Co., Ltd.

Address: No. 5, Kehui St. 1, Kehui Development Center, Science Ave., Guangzhou Science City, Huangpu District, Guangzhou, P. R. China  
Tel: 86-20-38601850 Fax: 86-20-38601272 E-mail: info@mornsun.cn www.mornsun-power.com