

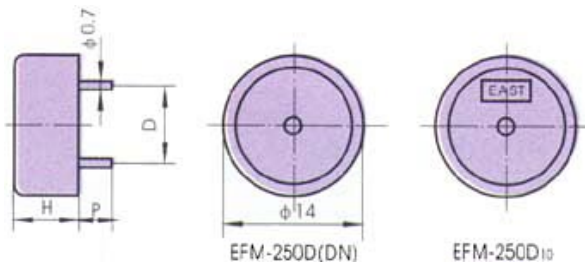
▪ **EFM-250D (DN, D10)**



**FEATURES:**

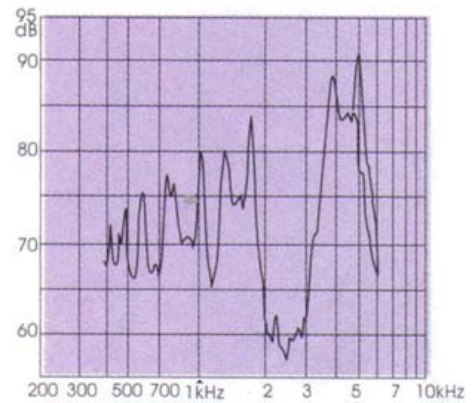
- Compact structure
- Sealed for wave soldering and washing

**DIMENSIONS: (Unit: mm)**



EFM-250DN: H=7.0, D=7.6, P=3  
 EFM-250D: H=7.5, D=7.6, P=3  
 EFM-250D10: H=8.0, D=10, P=4.5  
 Note: EFM-250D EFM-250D10 is adopted with epoxy potting at the bottom

**CHARACTERISTICS:**



EFM-250D 5V<sub>p-p</sub> Square Wave/10cm

ELECTRICAL SPECIFICATIONS :		
Model No.	EFM-250D(D10)	EFM-250DN
Min. Sound Pressure Level (dB)	80 /4.1kHz/5V <sub>p-p</sub> Square Wave /10cm	80 /4.1kHz/9V <sub>p-p</sub> Square Wave /10cm
Max. Consumption (mA)	2 /4.1kHz/5V <sub>p-p</sub> Square Wave	2 /4.1kHz/9V <sub>p-p</sub> Square Wave
Resonant Frequency (kHz)	4.1 ± 0.5	
Capacitance at 1000Hz (nF)	10 ± 30%	
Allowable Input Voltage (V <sub>p-p</sub> )	20	
Operating Temperature (°C)	-20 ~ +70	
Weight (g)	1	
Case Material/Colour	PA6/Black	PC/Black
PACKING INFORMATION :		
Packing :	5000 pcs per export carton	
Carton Size :	47 X 30.5 X 33 cm	
G. Weight :	7.0 kgs	
N. Weight :	5.0 kgs	