



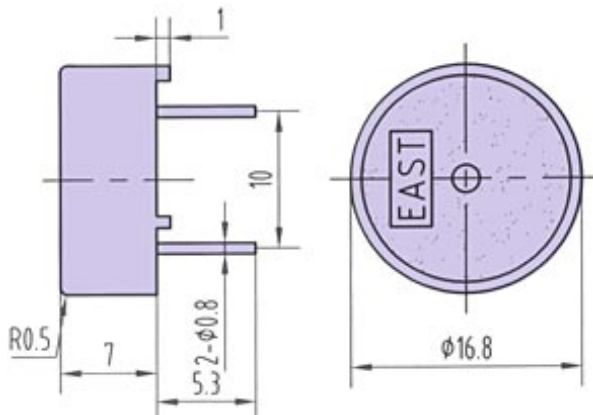
• **TFM-25**



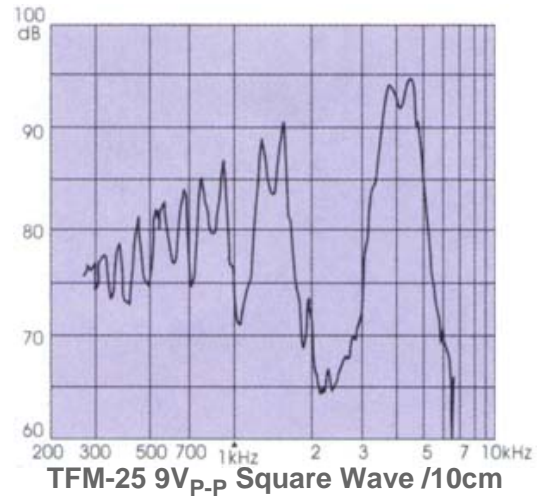
**FEATURES:**

- Small size
- Simple structure
- A good ratio of price to quality

**DIMENSIONS:** (Unit: mm)



**CHARACTERISTICS:**



**ELECTRICAL SPECIFICATIONS :**

Model No.	TFM-25
Min. Sound Pressure Level (dB)	80 /4kHz/9V <sub>P-P</sub> Square Wave /10cm
Max. Consumption (mA)	1.5 /4.0kHz/9V <sub>P-P</sub> Square Wave
Resonant Frequency (kHz)	4.0 ± 0.5
Capacitance at 1000Hz (nF)	9.5 ± 30%
Allowable Input Voltage (V <sub>P-P</sub> )	25
Operating Temperature (°C)	-20 ~ +70
Weight (g)	1.7
Case Material/Colour	PC/Black

**PACKING INFORMATION :**

Packing :	5000 pcs per export carton
Carton Size :	47 X 30.5 X 35 cm
G. Weight :	10 kgs
N. Weight :	8.5 kgs

• **TFM-59DA<sub>1</sub>(DA<sub>2</sub>)**

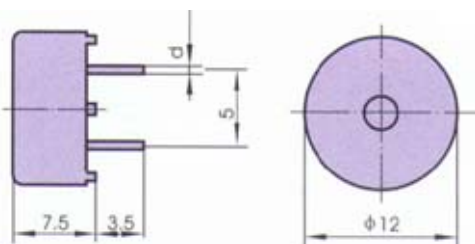


**FEATURES:**

- Super mini size
- Low current consumption
- High output

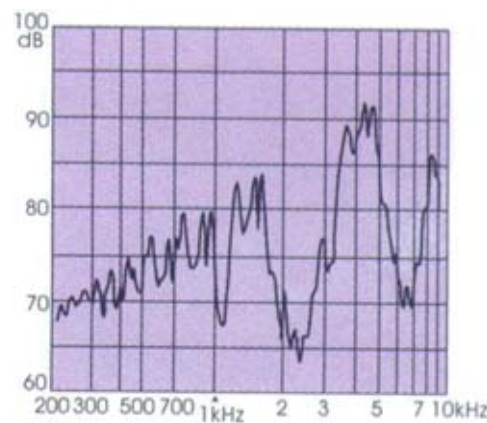
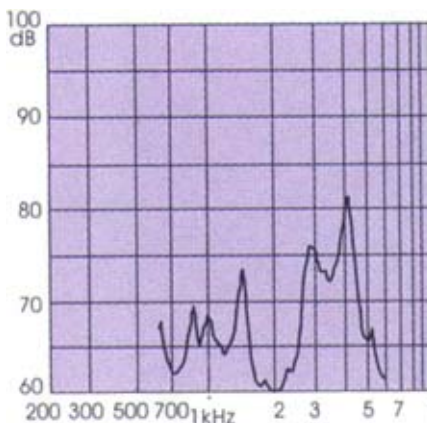
<b>TFM59DA-1</b>	d=Ø0.8
<b>TFM-59DA-2</b>	d=Ø0.7

**DIMENSIONS: (Unit: mm)**



**TFM-59D**

**CHARACTERISTICS:**



**TFM-59DA-1 3V<sub>p-p</sub> Square Wave /10cm TFM-59DA-2 12V<sub>p-p</sub> Square Wave /10cm**

<b>ELECTRICAL SPECIFICATIONS :</b>		
<b>Model No.</b>	<b>TFM-59DA-1</b>	<b>TFM-59DA-2</b>
Min. Sound Pressure Level (dB)	70/4.0kHz/3V <sub>p-p</sub> Square Wave /10cm	80/4.0kHz/12V <sub>p-p</sub> Square Wave /10cm
Max. Consumption (mA)	3/4.0kHz/3V <sub>p-p</sub> Square Wave	6/4.0kHz/12V <sub>p-p</sub> Square Wave
Resonant Frequency (kHz)	4.0 ± 0.5	
Capacitance at 1000Hz (nF)	11 ± 30%	
Allowable Input Voltage (V <sub>p-p</sub> )	25	
Operating Temperature (°C)	-20 ~ +70	
Weight (g)	1	
Case Material/Colour	PC/Black	
<b>PACKING INFORMATION :</b>		
Packing :	5000 pcs per export carton	
Carton Size :	47 X 30.5 X 25 cm	
G. Weight :	6.5 kgs	
N. Weight :	5 kgs	