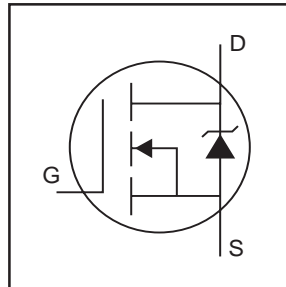


HEXFET® Power MOSFET

- Advanced Process Technology
- Dynamic dv/dt Rating
- 175°C Operating Temperature
- Fast Switching
- Fully Avalanche Rated

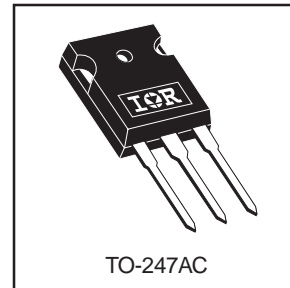


|                            |
|----------------------------|
| $V_{DSS} = 100V$           |
| $R_{DS(on)} = 0.052\Omega$ |
| $I_D = 33A$                |

**Description**

Fifth Generation HEXFETs from International Rectifier utilize advanced processing techniques to achieve the lowest possible on-resistance per silicon area. This benefit, combined with the fast switching speed and ruggedized device design that HEXFET Power MOSFETs are well known for, provides the designer with an extremely efficient device for use in a wide variety of applications.

The TO-247 package is preferred for commercial-industrial applications where higher power levels preclude the use of TO-220 devices. The TO-247 is similar but superior to the earlier TO-218 package because of its isolated mounting hole.



**Absolute Maximum Ratings**

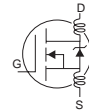
|                           | Parameter                                  | Max.                  | Units |
|---------------------------|--|-----------------------|-------|
| $I_D @ T_C = 25^\circ C$  | Continuous Drain Current, $V_{GS} @ 10V$ ⑤ | 33                    | A     |
| $I_D @ T_C = 100^\circ C$ | Continuous Drain Current, $V_{GS} @ 10V$ ⑤ | 23                    |       |
| $I_{DM}$                  | Pulsed Drain Current ①⑤                    | 110                   |       |
| $P_D @ T_C = 25^\circ C$  | Power Dissipation                          | 140                   | W     |
|                           | Linear Derating Factor                     | 0.91                  | W/°C  |
| $V_{GS}$                  | Gate-to-Source Voltage                     | ±20                   | V     |
| $E_{AS}$                  | Single Pulse Avalanche Energy ②⑤           | 300                   | mJ    |
| $I_{AR}$                  | Avalanche Current①                         | 16                    | A     |
| $E_{AR}$                  | Repetitive Avalanche Energy①               | 14                    | mJ    |
| dv/dt                     | Peak Diode Recovery dv/dt ③⑤               | 5.0                   | V/ns  |
| $T_J$                     | Operating Junction and                     | -55 to + 175          | °C    |
| $T_{STG}$                 | Storage Temperature Range                  |                       |       |
|                           | Soldering Temperature, for 10 seconds      | 300 (1.6mm from case) |       |
|                           | Mounting torque, 6-32 or M3 screw.         | 10 lbf•in (1.1N•m)    |       |

**Thermal Resistance**

|                 | Parameter                           | Min. | Typ. | Max. | Units |
|-----------------|-------------------------------------|------|------|------|-------|
| $R_{\theta JC}$ | Junction-to-Case                    | —    | —    | 1.1  | °C/W  |
| $R_{\theta CS}$ | Case-to-Sink, Flat, Greased Surface | —    | 0.24 | —    |       |
| $R_{\theta JA}$ | Junction-to-Ambient                 | —    | —    | 40   |       |

## Electrical Characteristics @ $T_J = 25^\circ\text{C}$ (unless otherwise specified)

|                                 | Parameter                            | Min. | Typ. | Max.  | Units    | Conditions   |
|---------------------------------|--------------------------------------|------|------|-------|----------|--|
| $V_{(BR)DSS}$                   | Drain-to-Source Breakdown Voltage    | 100  | —    | —     | V        | $V_{GS} = 0V, I_D = 250\mu A$                        |
| $\Delta V_{(BR)DSS}/\Delta T_J$ | Breakdown Voltage Temp. Coefficient  | —    | 0.11 | —     | V/°C     | Reference to $25^\circ\text{C}, I_D = 1mA$ ⑤         |
| $R_{DS(on)}$                    | Static Drain-to-Source On-Resistance | —    | —    | 0.052 | $\Omega$ | $V_{GS} = 10V, I_D = 16A$ ④                          |
| $V_{GS(th)}$                    | Gate Threshold Voltage               | 2.0  | —    | 4.0   | V        | $V_{DS} = V_{GS}, I_D = 250\mu A$                    |
| $g_{fs}$                        | Forward Transconductance             | 11   | —    | —     | S        | $V_{DS} = 50V, I_D = 16A$ ⑤                          |
| $I_{DSS}$                       | Drain-to-Source Leakage Current      | —    | —    | 25    | $\mu A$  | $V_{DS} = 100V, V_{GS} = 0V$                         |
|                                 |                                      | —    | —    | 250   |          | $V_{DS} = 80V, V_{GS} = 0V, T_J = 150^\circ\text{C}$ |
| $I_{GSS}$                       | Gate-to-Source Forward Leakage       | —    | —    | 100   | nA       | $V_{GS} = 20V$                                       |
|                                 | Gate-to-Source Reverse Leakage       | —    | —    | -100  |          | $V_{GS} = -20V$                                      |
| $Q_g$                           | Total Gate Charge                    | —    | —    | 94    | nC       | $I_D = 16A$  |
| $Q_{gs}$                        | Gate-to-Source Charge                | —    | —    | 15    |          | $V_{DS} = 80V$                                       |
| $Q_{gd}$                        | Gate-to-Drain ("Miller") Charge      | —    | —    | 43    |          | $V_{GS} = 10V$ , See Fig. 6 and 13 ④ ⑤               |
| $t_{d(on)}$                     | Turn-On Delay Time                   | —    | 8.2  | —     |          | $V_{DD} = 50V$                                       |
| $t_r$                           | Rise Time                            | —    | 39   | —     | ns       | $I_D = 16A$  |
| $t_{d(off)}$                    | Turn-Off Delay Time                  | —    | 44   | —     |          | $R_G = 5.1\Omega$                                    |
| $t_f$                           | Fall Time                            | —    | 33   | —     |          | $R_D = 3.0\Omega$ , See Fig. 10 ④ ⑤                  |
| $L_D$                           | Internal Drain Inductance            | —    | 5.0  | —     |          | nH   |
| $L_S$                           | Internal Source Inductance           | —    | 13   | —     |          |  |
| $C_{iss}$                       | Input Capacitance                    | —    | 1400 | —     | pF       | $V_{GS} = 0V$  |
| $C_{oss}$                       | Output Capacitance                   | —    | 330  | —     |          | $V_{DS} = 25V$                                       |
| $C_{rss}$                       | Reverse Transfer Capacitance         | —    | 170  | —     |          | $f = 1.0MHz$ , See Fig. 5⑤                           |



## Source-Drain Ratings and Characteristics

|          | Parameter                                 | Min. | Typ. | Max. | Units   | Conditions  |
|----------|---|------|------|------|---------|---|
| $I_S$    | Continuous Source Current<br>(Body Diode) | —    | —    | 33   | A       | MOSFET symbol<br>showing the<br>integral reverse<br>p-n junction diode. |
| $I_{SM}$ | Pulsed Source Current<br>(Body Diode) ① ⑤ | —    | —    | 110  |         |   |
| $V_{SD}$ | Diode Forward Voltage                     | —    | —    | 1.3  | V       | $T_J = 25^\circ\text{C}, I_S = 16A, V_{GS} = 0V$ ④                      |
| $t_{rr}$ | Reverse Recovery Time                     | —    | 170  | 250  | ns      | $T_J = 25^\circ\text{C}, I_F = 16A$                                     |
| $Q_{rr}$ | Reverse Recovery Charge                   | —    | 1.1  | 1.6  | $\mu C$ | $di/dt = 100A/\mu s$ ④ ⑤  |

### Notes:

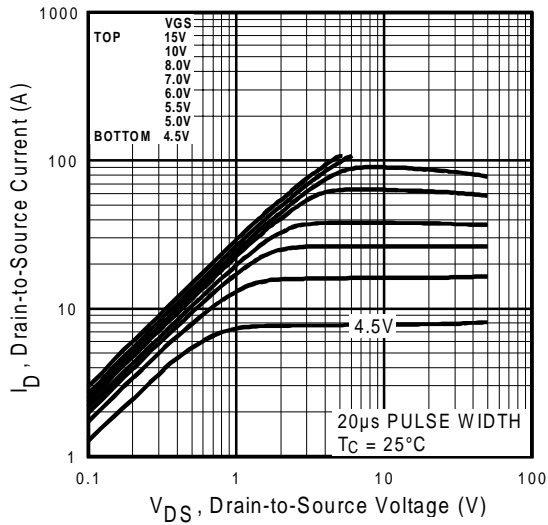
① Repetitive rating; pulse width limited by max. junction temperature. ( See fig. 11 )

②  $V_{DD} = 25V$ , starting  $T_J = 25^\circ\text{C}$ ,  $L = 2.0mH$   
 $R_G = 25\Omega, I_{AS} = 16A$ . (See Figure 12)

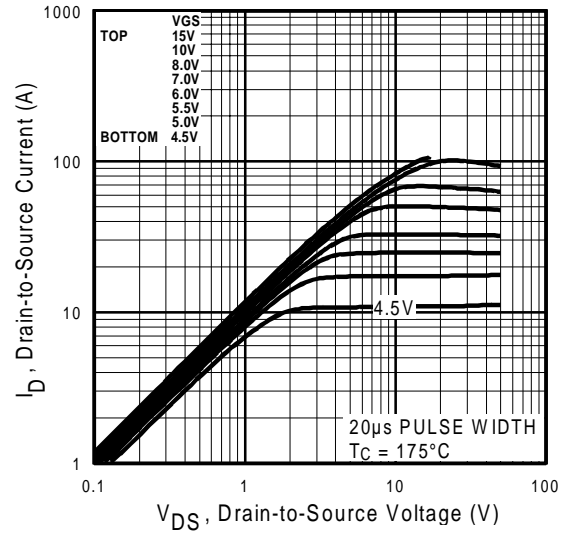
③  $I_{SD} \leq 16A, di/dt \leq 210A/\mu s, V_{DD} \leq V_{(BR)DSS}, T_J \leq 175^\circ\text{C}$

④ Pulse width  $\leq 300\mu s$ ; duty cycle  $\leq 2\%$ .

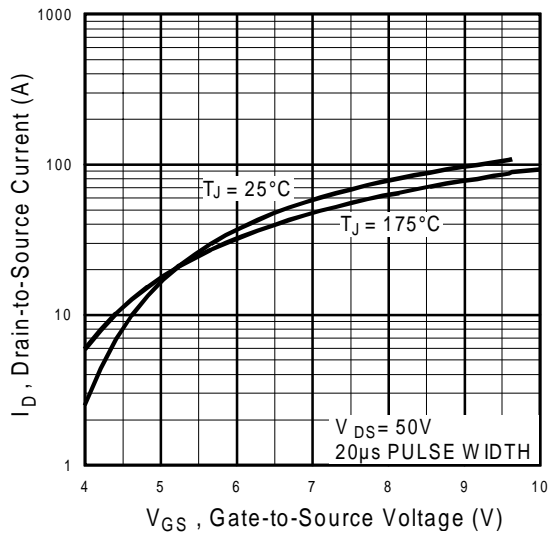
⑤ Uses IRF540N data and test conditions.



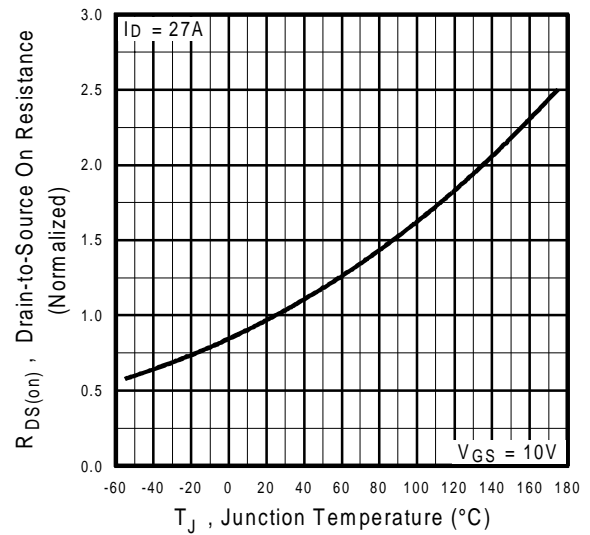
**Fig 1.** Typical Output Characteristics



**Fig 2.** Typical Output Characteristics

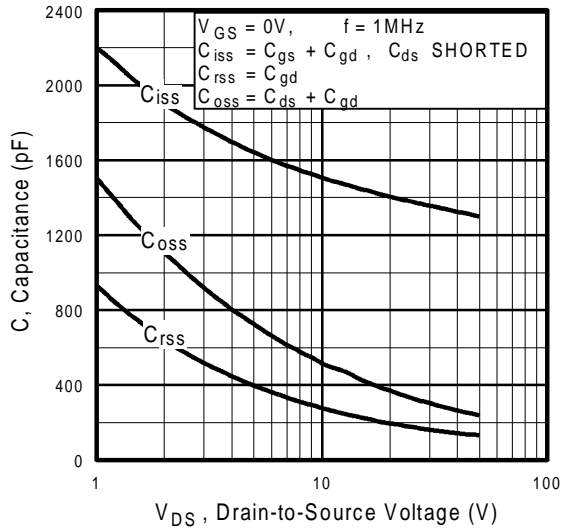


**Fig 3.** Typical Transfer Characteristics

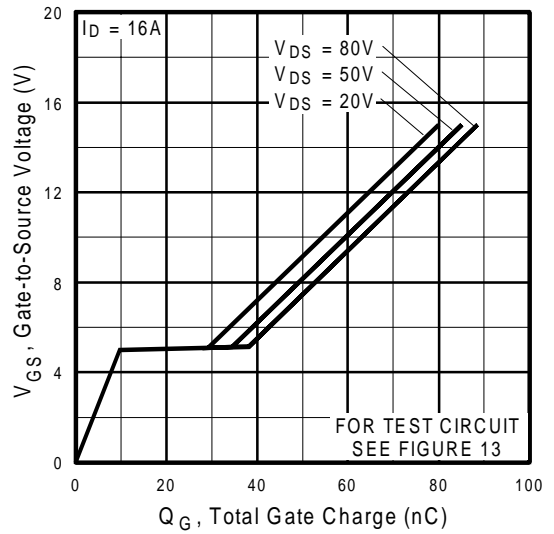


**Fig 4.** Normalized On-Resistance Vs. Temperature

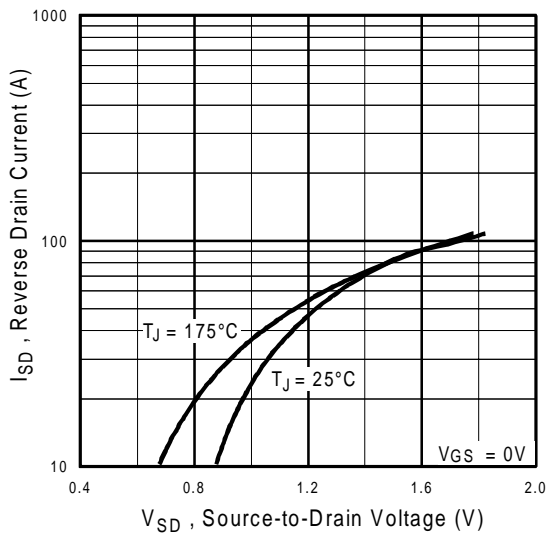
# IRFP140N



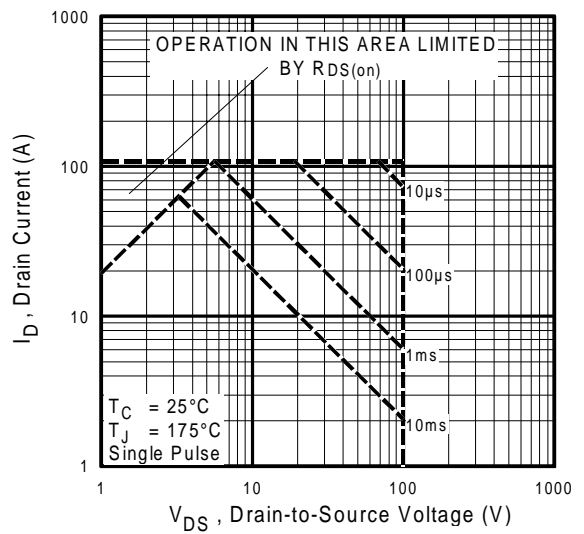
**Fig 5.** Typical Capacitance Vs. Drain-to-Source Voltage



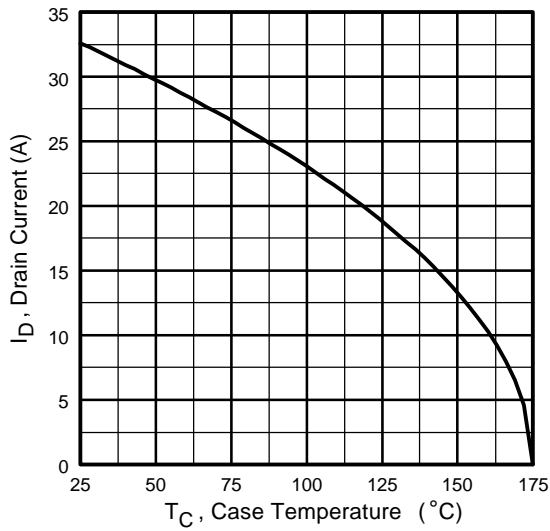
**Fig 6.** Typical Gate Charge Vs. Gate-to-Source Voltage



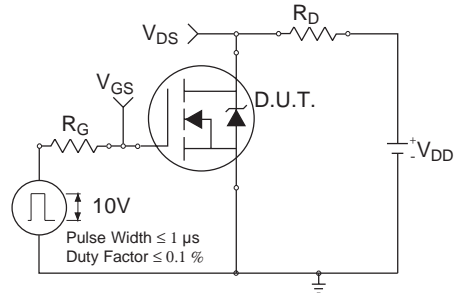
**Fig 7.** Typical Source-Drain Diode Forward Voltage



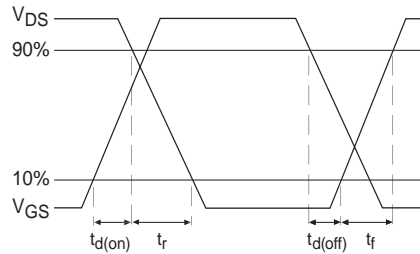
**Fig 8.** Maximum Safe Operating Area



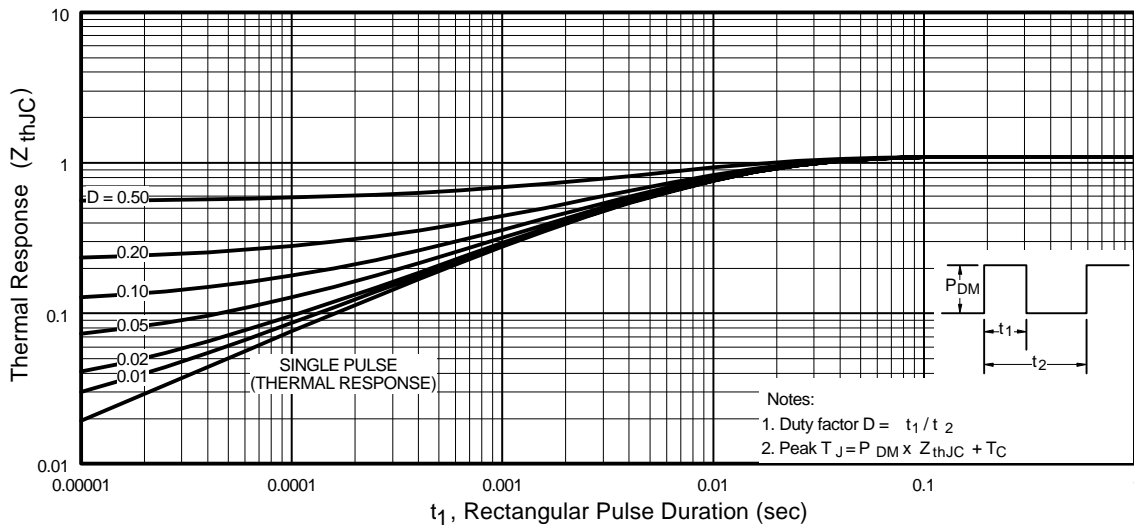
**Fig 9.** Maximum Drain Current Vs. Case Temperature



**Fig 10a.** Switching Time Test Circuit

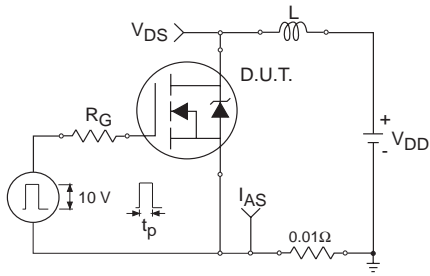


**Fig 10b.** Switching Time Waveforms

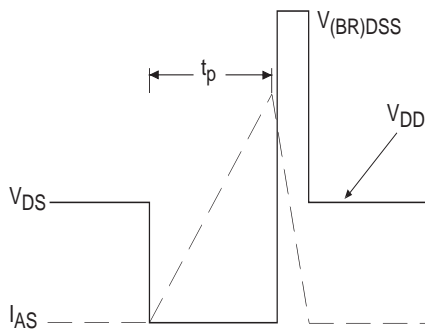


**Fig 11.** Maximum Effective Transient Thermal Impedance, Junction-to-Case

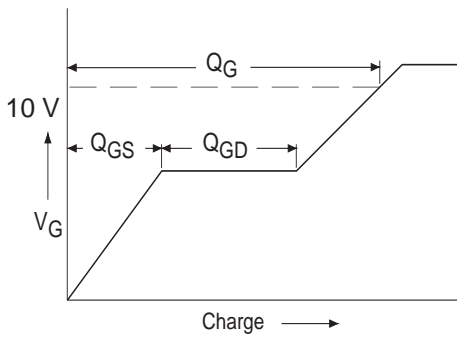
# IRFP140N



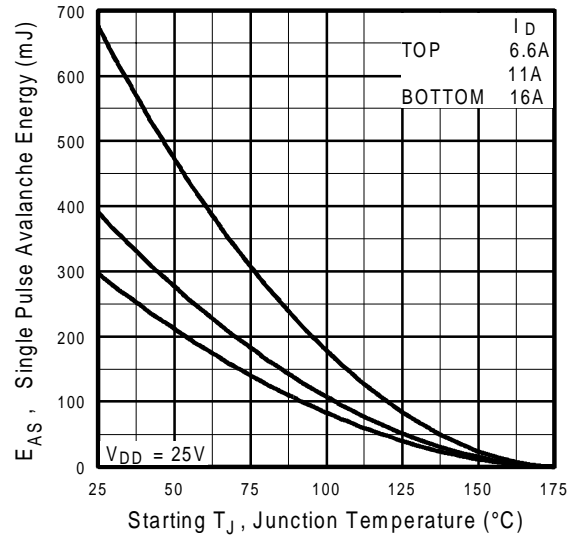
**Fig 12a.** Unclamped Inductive Test Circuit



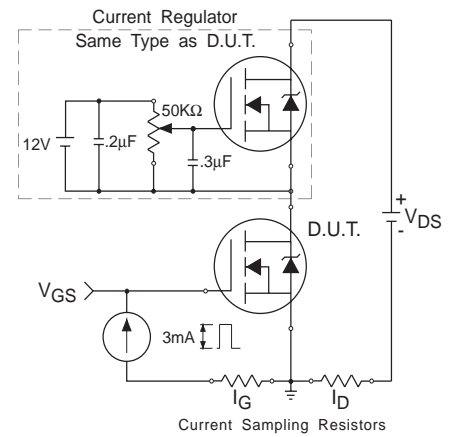
**Fig 12b.** Unclamped Inductive Waveforms



**Fig 13a.** Basic Gate Charge Waveform

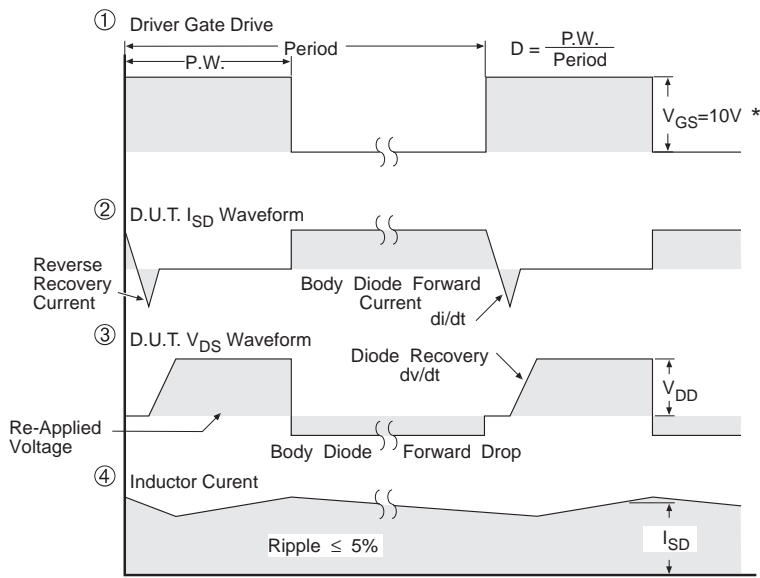


**Fig 12c.** Maximum Avalanche Energy Vs. Drain Current



**Fig 13b.** Gate Charge Test Circuit

**Peak Diode Recovery dv/dt Test Circuit**



\*  $V_{GS} = 5V$  for Logic Level Devices

**Fig 14.** For N-Channel HEXFETS

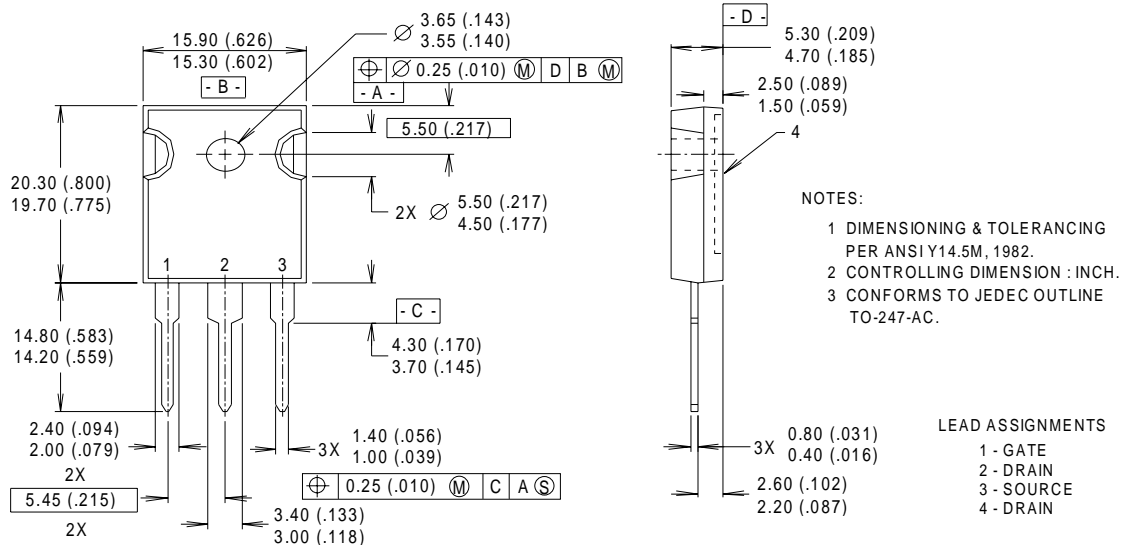
# IRFP140N

International  
**IR** Rectifier

## Package Outline

### TO-247AC Outline

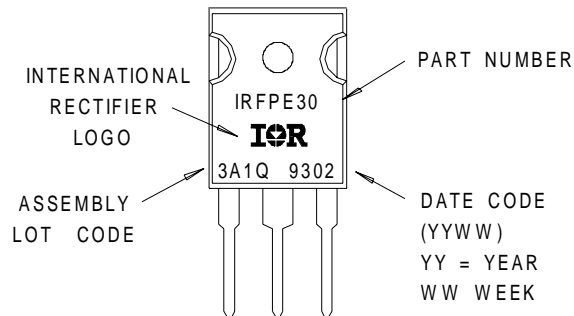
Dimensions are shown in millimeters (inches)



## Part Marking Information

### TO-247AC

EXAMPLE : THIS IS AN IRFPE30  
WITH ASSEMBLY  
LOT CODE 3A1Q



International  
**IR** Rectifier

**WORLD HEADQUARTERS:** 233 Kansas St., El Segundo, California 90245, Tel: (310) 322 3331

**IR GREAT BRITAIN:** Hurst Green, Oxted, Surrey RH8 9BB, UK Tel: ++ 44 1883 732020

**IR CANADA:** 15 Lincoln Court, Brampton, Ontario L6T3Z2, Tel: (905) 453 2200

**IR GERMANY:** Saalburgstrasse 157, 61350 Bad Homburg Tel: ++ 49 6172 96590

**IR ITALY:** Via Liguria 49, 10071 Borgaro, Torino Tel: ++ 39 11 451 0111

**IR FAR EAST:** K&H Bldg., 2F, 30-4 Nishi-Ikebukuro 3-Chome, Toshima-Ku, Tokyo Japan 171 Tel: 81 3 3983 0086

**IR SOUTHEAST ASIA:** 1 Kim Seng Promenade, Great World City West Tower, 13-11, Singapore 237994 Tel: ++ 65 838 4630

**IR TAIWAN:** 16 Fl. Suite D. 207, Sec. 2, Tun Haw South Road, Taipei, 10673, Taiwan Tel: 886-2-2377-9936

<http://www.irf.com/> Data and specifications subject to change without notice. 8/98



Note: For the most current drawings please refer to the IR website at:  
<http://www.irf.com/package/>