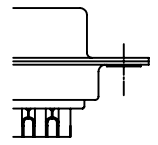
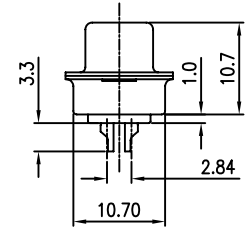
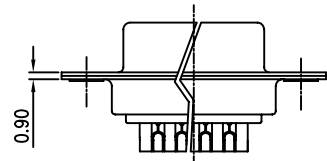
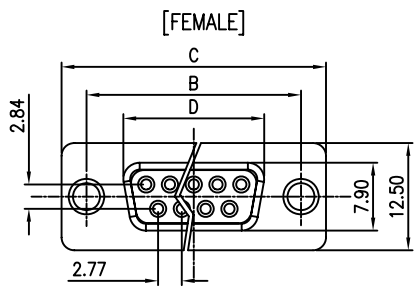


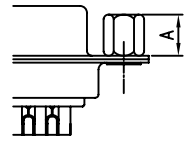
REV.	DESCRIPTION	DRAWN	CHECKED	APPROVED

NOTES:

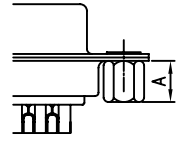
- ELECTRICAL CHARACTERISTICS:
 - CONTACT RESISTANCE: 20mΩ Max. INITIAL.
 - DIELECTRIC WITHSTANDING VOLTAGE: 500V AC(rms) FOR 1 MINUTE.
 - INSULATION RESISTANCE: 1000MΩ Min.
- ENVIRONMENT CHARACTERISTICS:
 - OPERATING TEMPERATURE: 0°C~+85°C.
 - STORAGE TEMPERATURE: -20°C~+70°C.
- PART NUMBER: DS1033
- PRODUCT NUMBER CODE:
 DS1033- X X X X X X X
 SCREW DIM. A
 S: Standard(W/O nut)
 1: 5.00
 2: 3.00
 3: 5.20
 4: 4.80
 5: 5.80
 6: 4.00
 SCREW TYPE
 S: Standard(W/O nut)
 1: CC TYPE
 2: CS TYPE
 4: BRJ TYPE DIM. C: 3~4mm
 5: BRJ TYPE DIM. C: 5~6mm
 CONTACT PLATING
 8: FULL GOLD FLASH
 Si: SELECTIVE GOLD FLASH
 SHELL PLATING
 T: FRONT & BACK SHELL Tin
 N: FRONT SHELL Nickel, BACK SHELL Tin
 HOUSING COLOR
 B: BLACK
 W: WHITE
 U: BLUE
 CONNECTOR TYPE
 M: Male
 F: Female
 No. OF CONTACTS
 09: 9pos.
 15: 15pos.
 25: 25pos.
 37: 37pos.



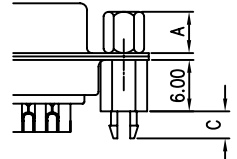
Standard



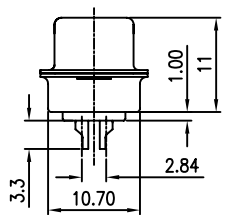
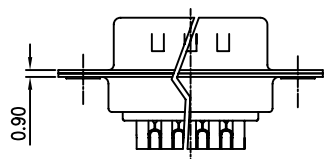
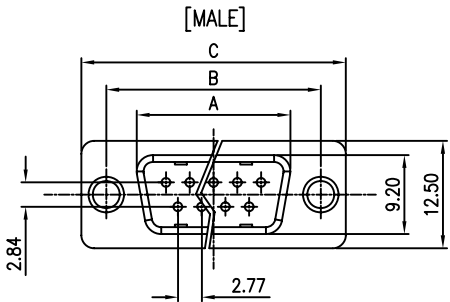
CC TYPE



CS TYPE



BRJ TYPE:



Dimension

Position	A±0.2	B±0.2	C±0.3	D
9	17.90	24.99	30.80	16.33
15	26.50	33.32	39.14	24.66
25	40.00	47.04	53.04	38.38
37	56.50	63.50	69.32	54.84

GENERAL TOLERANCE		ANGLE TOLERANCE	
X.	±0.60	X.	±5°
.X	±0.38	.X	±3°
.XX	±0.25	.XX	±2°
DRAWING TYPE		CUSTOMER	
SCALE		1:1	SHEET 1 OF 1
DRAWING NO.		C-DS1033-XXXXXXX	

PROJECTION	TITLE
	D-SUB SOLDER TYPE
UNITS	mm
SHEET SIZE	A4
SERIES	DS1033 SERIES
DB-15F, DB-15M, DB-25F, DB-25M, DB-37F, DB-37M, DB-50M, DB-9, DB-9M	