



No.1493

STK5422

Thick Film Hybrid Integrated Circuit
**4-OUTPUT SERIES REGULATOR
 FOR VTR APPLICATIONS**

Features

1. 4-output/1-package voltage regulator fabricated using Sanyo's original IMST (Insulated Metal Substrate Technology).
2. Provides cutoff function to cut off output voltage according to external signal.
3. Output voltages of 4 outputs are set.
4. Small size and excellent cost performance.

Maximum Ratings at Ta=25°C

		Vo1	Vo2	Vo3	Vo4	unit
Maximum Output Current	Iomax Average/Peak	1/2.5	1/2	0.5/1	1/2	A
Maximum DC Input Voltage	Vin(DC)max	→	→	→	30	V
Thermal Resistance	θj-c	→	→	→	4.5	°C/W
Operating Case Temperature	Tc	→	→	→	105	°C
Junction Temperature	Tj	→	→	→	150	°C
Storage Temperature	Tstg	→	→	→	-30~+105	°C

Operating Characteristics at Ta=25°C

		Vo1	Vo2	Vo3	Vo4	unit
Output Voltage Setting	Condition 1	13.0 ±0.3	9.5 ±0.1	12.0 ±0.3	12.0 ±0.3	V
Ripple Rejection	Condition 2	*5	5	5	5	mVppmax
Output Cutoff Characteristic	1V or less ON with- 3V or more OFF out		with	with- out	with	
Temperature Coefficient	Condition 1	→	→	→	0.02%/°C	Cmax
Input Regulation	Condition 3	30	35	35	35	mV/Vmax
Load Regulation	Condition 4	45	35	35	35	mV/Amax
Minimum Input-Output Voltage Difference	Condition 5	1.2	-	1.2	1.2	Vmax

Condition 1: Vin(DC)1=18V Vin(DC)2=15V, Io1=1.8A, Io2, Io4=1A, Io3=0.5A

Condition 2: Vin(DC)1=18V Vin(DC)2=15V, Io1=1.8A, Io2, Io4=1A, Io3=0.5A

Input ripple=1.5Vpp, *: Output noise of Vo1: 50mVppmax

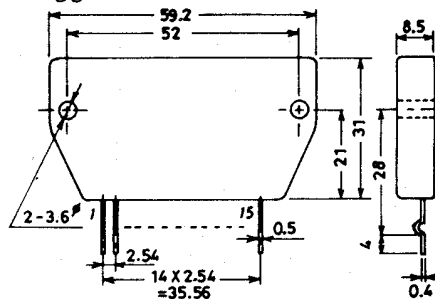
Condition 3: Vin(DC)1=18V±3V, Vin(DC)2=15V±2V,

Io1=1.8A, Io2, Io4=1A, Io3=0.5A

Condition 4: Vin(DC)1=18V, Vin(DC)2=15V, Io1, Io2, Io4=0.2 to 2.0A Io3=0 to 1A

Condition 5: Io1=1.8A, Io2, Io4=1A, Io3=0.5A

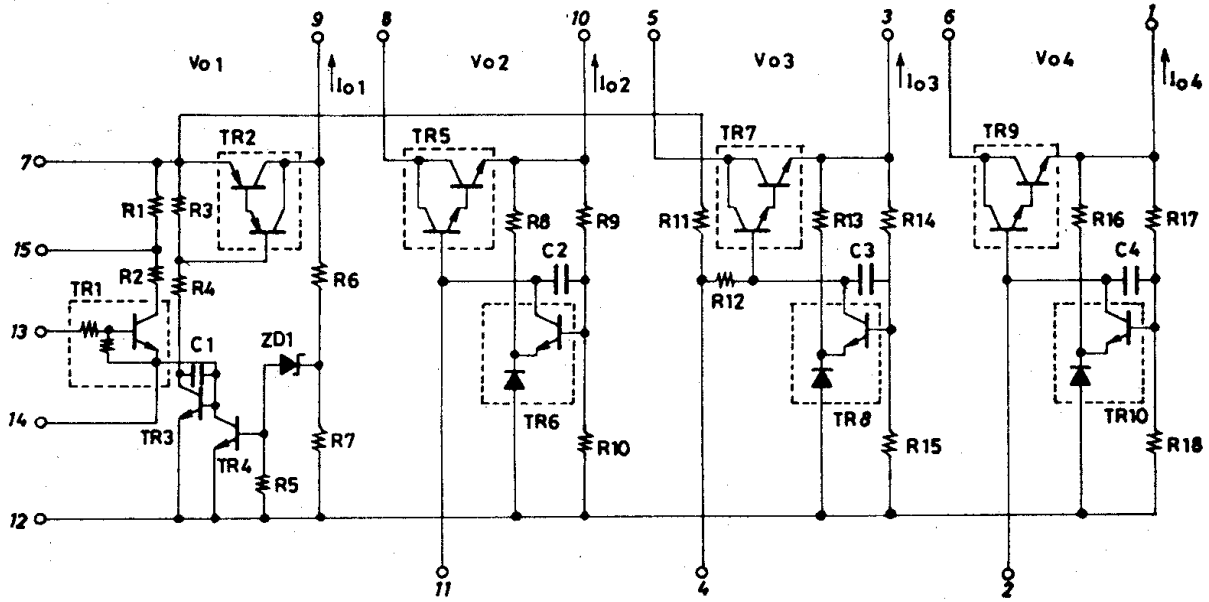
Case Outline 4033
(unit:mm)



Information furnished by SANYO is believed to be accurate and reliable. However, no responsibility is assumed by SANYO for its use; nor for any infringements of patents or other rights of third parties which may result from its use, and no license is granted by implication or otherwise under any patent or patent rights of SANYO.

These specifications are subject to change without notice.

Equivalent Circuit



※ : Pin 13 : Vo1 cutoff pin

Test Circuit

