

REV.	DESCRIPTION	DRAWN	CHECKED	APPROVED

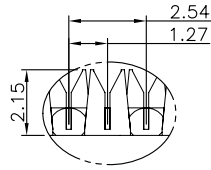
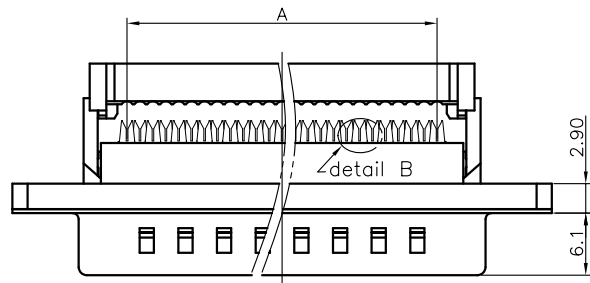
NOTES:

- ELECTRICAL CHARACTERISTICS:
 - CONTACT RESISTANCE: 30mΩ Max.INITIAL.
 - DIELECTRIC WITHSTANDING VOLTAGE:500V AC(rms) FOR 1 MINUTE.
 - INSULATION RESISTANCE:1000MΩ Min.
- MECHANICAL CHARACTERISTICS:
 - DURABILITY: 300 CYCLES.
- ENVIRONMENT CHARACTERISTICS:
 - OPERATING TEMPERATURE:0°C~+85°C.
 - STORAGE TEMPERATURE:-20°C~+70°C.

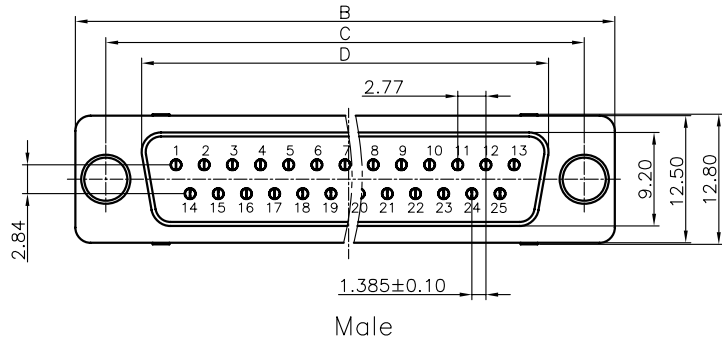
4. PRODUCT NUMBER CODE:

DS1036 - XX X X X X X

- XX: RIVET TYPE
- X: P:W/ SCREW(UNC #4-40)
- X: N:W/O SEREW
- X: CONTACT PLATING
- X: O: SELECTIVE GOLD FLASH
- X: HOUSING COLOR
- U:BLUE
- B:BLACK
- P:W/ STRAIN RELIEF
- N:W/O
- M:MALE
- F:FEMALE
- No.OF CONTACTS
- 09:9pos
- 15:15pos
- 25:25pos
- 37:37pos

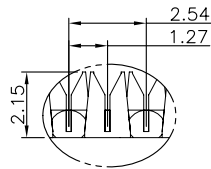
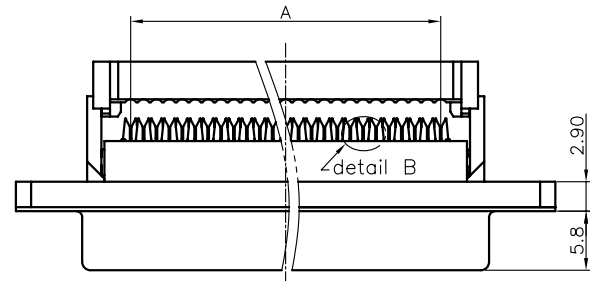


detail B
Scale 3:1

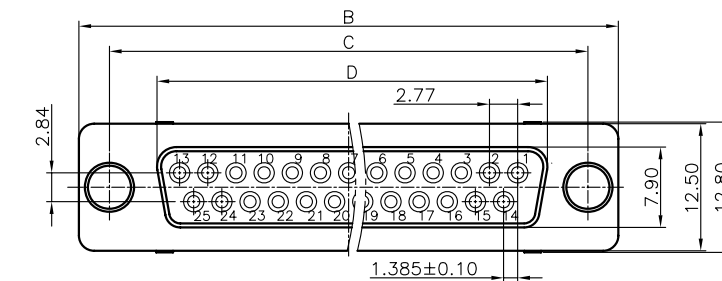


Position	D±0.2			E±0.2	
	A±0.1	B±0.2	C±0.2	Male	Female
9P	10.16	30.80	24.99	17.90	16.33
15P	17.78	39.14	33.32	26.50	24.66
25P	30.48	53.04	47.04	40.00	38.38
37P	45.72	69.32	63.50	56.50	54.84

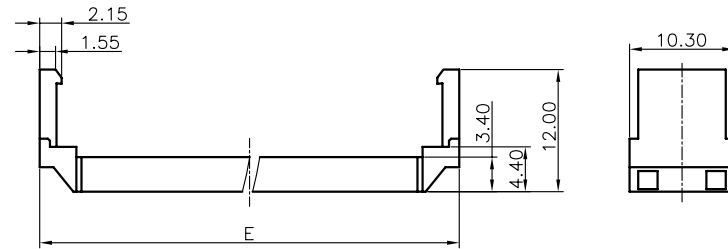
Male



detail B
Scale 3:1



Female



UPPER COVER

GENERAL TOLERANCE		ANGLE TOLERANCE		PROJECTION	TITLE
X.	±0.60	X.	±3°	mm	I.D.C D-SUB
.X	±0.38	.X	±2°	A4	SERIES DS1036 SERIES
.XX	±0.25	.XX	±1°	DI-15F, DI-15M, DI-25F, DI-25M, DI-37F, DI-37M, DI-9F, DI-9M	
DRAWING TYPE		CUSTOMER			
SCALE		1:1	SHEET 1 OF 1		
DRAWING NO.		C-DS1036-XXXXXXX			